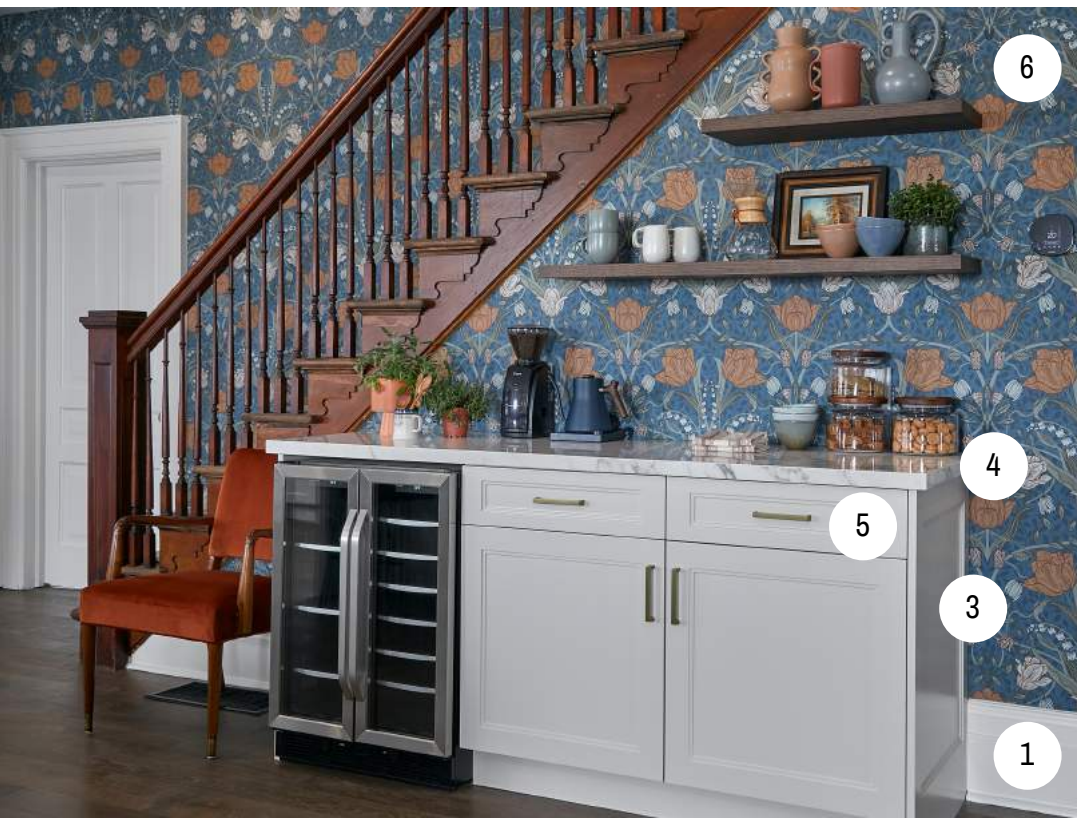




FARMHOUSE FACELIFT

JENN & DARREN - SHOPPING GUIDE



- 1. PAINT: SICO - [Walls](#): 6021-63 Frozen Island | [Trim](#): 6215-11 Pillow Cloud
- 2. DECOR FRAME: [Lowe's](#) - Prisma Black frame
- 3. CABINETRY: [Altima Kitchens](#)
- 4. COUNTERTOP: Ciot - [Arabescato Lev.](#)
- 5. CABINETRY HARDWARE: Battle Creek Hardware - [Portland in Florentine Brass](#)
- 6. WALLPAPER: Brewster Home Fashions - [Tulipa Blue Floral](#)





FARMHOUSE FACELIFT

JENN & DARREN - SHOPPING GUIDE



1. PAINT: SICO - Walls and Trim: 6215-11 Pillow Cloud
2. CABINETRY: Altima Kitchens
3. COUNTERTOPS & TILES: Ciot - Arabescato Lev. | Soho London Fog Glossy.
4. SINK AND FAUCET: House of Rohl - Culinario kitchen sink | Soap dispenser | Sink basket strainer | Armstrong pull-down kitchen faucet in English Gold
5. CABINETRY HARDWARE: Battle Creek Hardware - Portland in Florentine Brass
6. LIGHTING: Z-Lite - Parsons Chandelier
7. WINDOWS: Jeld-Wen





FARMHOUSE FACELIFT

JENN & DARREN - SHOPPING GUIDE

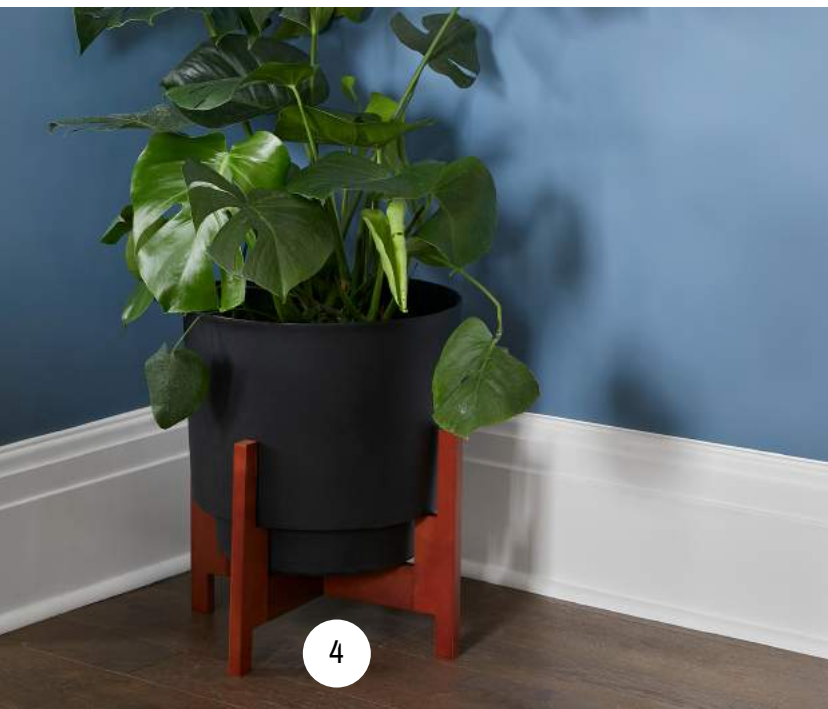


- 1. CABINERY: [Altima Kitchens](#)
- 2. COUNTERTOPS & TILES: Ciot - [Arabescato Lev.](#) | [Soho London Fog Glossy](#)
- 3. SINK AND FAUCET: House of Rohl - [Culinario kitchen sink](#) | [Soap dispenser](#) | [Sink basket strainer](#) | [Armstrong pull-down kitchen faucet in English Gold](#)
- 4. CABINERY HARDWARE: Battle Creek Hardware - [Portland in Florentine Brass](#)
- 5. LIGHTING: Z-Lite - [Parsons Chandelier](#)



FARMHOUSE FACELIFT

JENN & DARREN - SHOPPING GUIDE



1. PAINT: SICO - Walls: 6021-63 Frozen Island |
Trim: 6215-11 Pillow Cloud

2. INSULATION: Rockwool

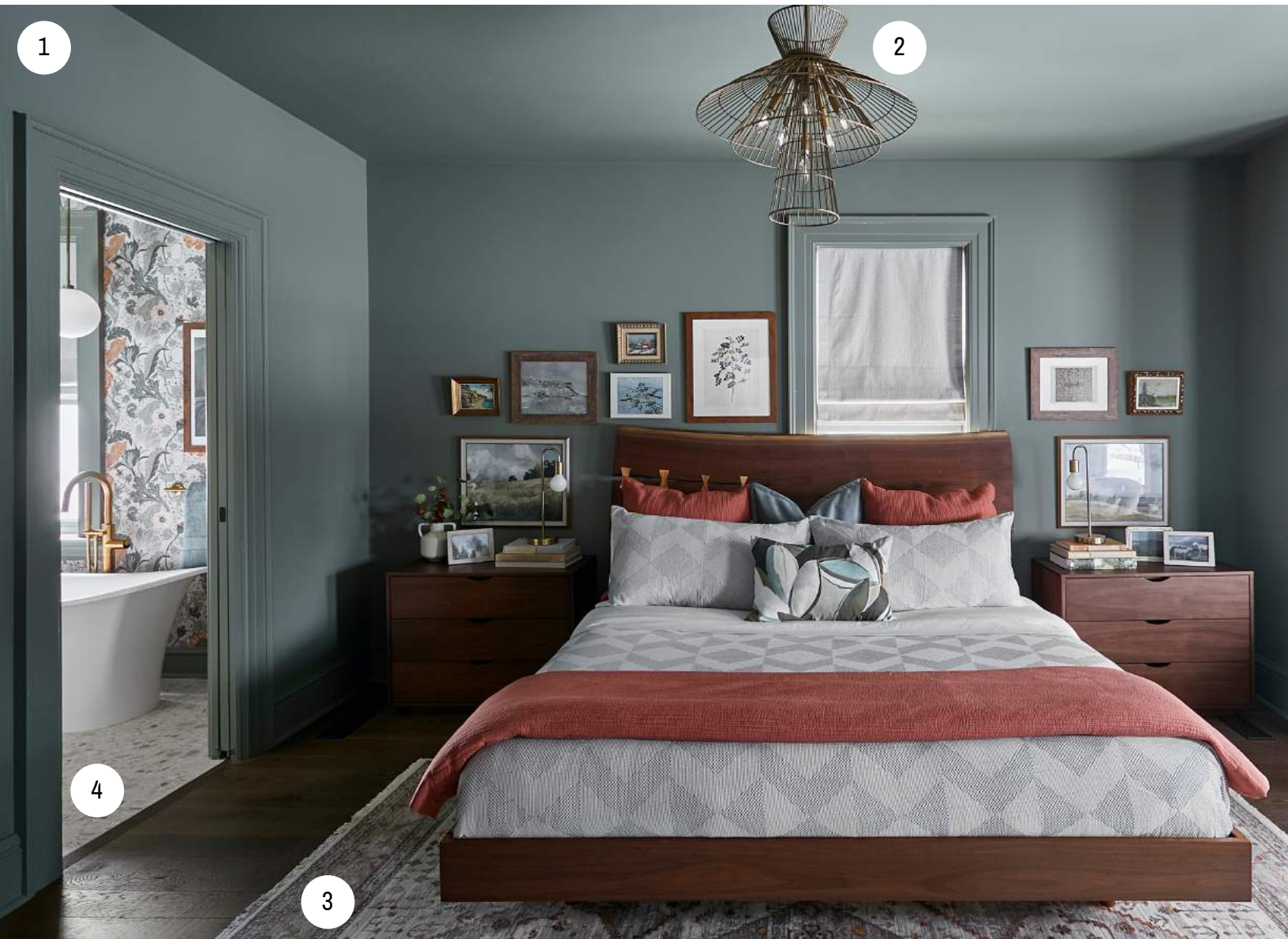
3. LIGHTING: Z-Lite - Lenyx Pendant

4. PLANTER: Lowe's - Charcoal planter



FARMHOUSE FACELIFT

JENN & DARREN - SHOPPING GUIDE



1. PAINT: SICO - Walls, Trim & Ceiling: 6205-63 Monashee Mountains

2. LIGHTING: Z-Lite - Alito Chandelier

3. AREA RUG: Viana Inc. - Heirloom Collection

4. TILE FLOOR: Ciot - Ceppo di Gre White

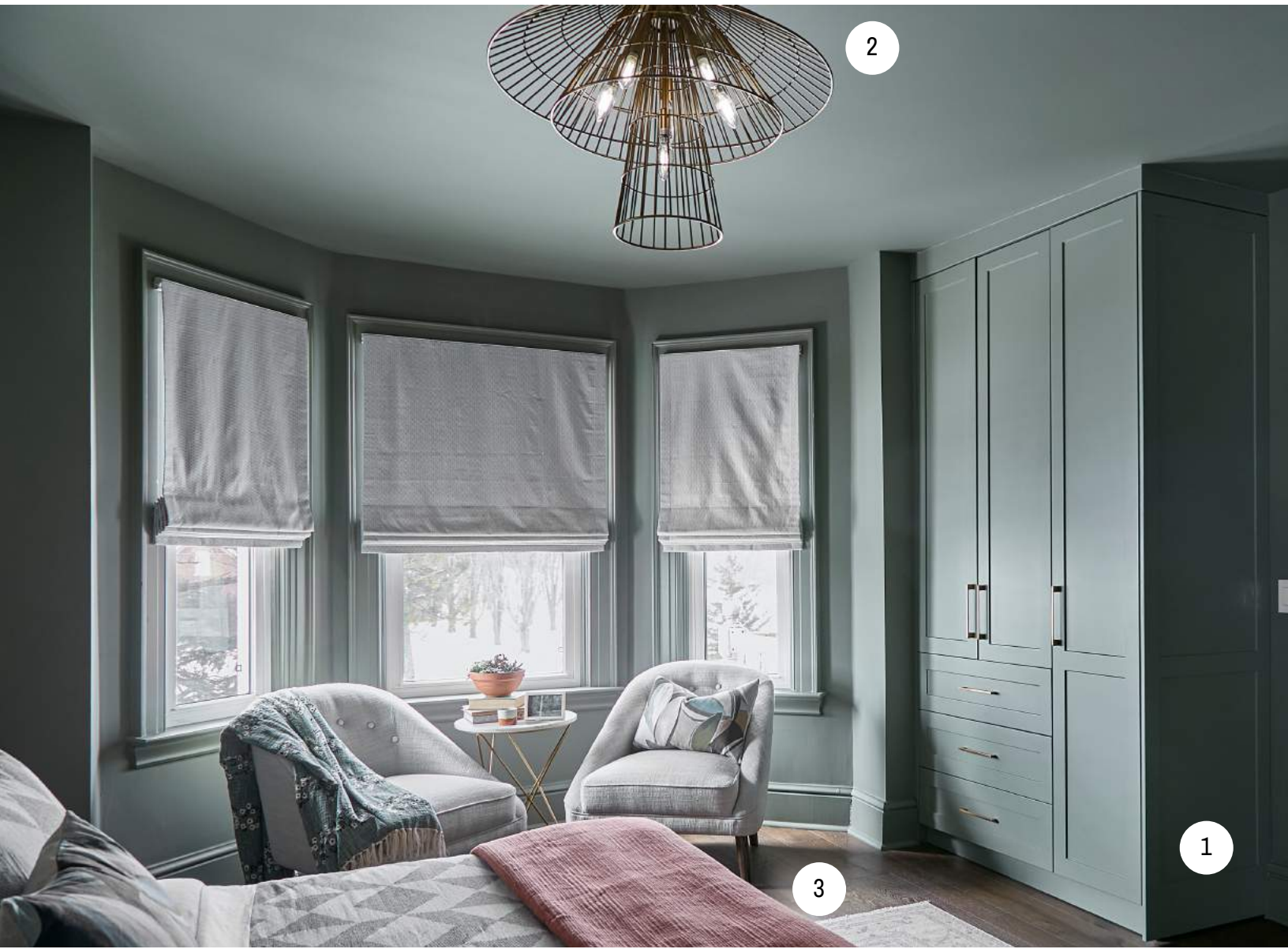
5. SIDE LAMPS: Lowe's - 18" Table lamps

6. LIVE EDGE WOOD MATERIALS: Rustic and Reclaimed



FARMHOUSE FACELIFT

JENN & DARREN - SHOPPING GUIDE



1. PAINT: SICO - Walls, Wardrobes, Trim & Ceiling: 6205-63 Monashee Mountains

2. LIGHTING: Z-Lite - Alito Chandelier

3. AREA RUG: Viana Inc. - Heirloom

4. PLANTER: Lowe's - Terracotta Bowl

5. FURNITURE: LH Imports - Lydia Club Chairs | Earth Wind & Fire Marble Side Table

6. CABINET HARDWARE: Battle Creek Hardware - Portland Flat Top Bar Pull





FARMHOUSE FACELIFT

JENN & DARREN - SHOPPING GUIDE



1. PAINT: SICO - Trim & Ceiling: 6205-63
Monashee Mountains

2. INSULATION: Rockwool

3. FIXTURES: House of Rohl - Graceline Paper holder | Tub filler | Towel bar | Toulouse bathtub

4. TILE FLOOR: Ciot - Ceppo di Gre White

5. LIGHTING: Lowe's - Simone Pendant

6. WALLPAPER: Brewster Home Fashions - Anemone Grey Floral





FARMHOUSE FACELIFT

JENN & DARREN - SHOPPING GUIDE



1. PAINT: SICO - Trim & Ceiling: 6205-63 Monashee Mountains

2. SHOWER: House of Rohl - Momenti 3-Way System With Hand Shower Rail Shower Head And Spout

3. TILE FLOOR: Ciot - Revival Alloy Bright Nat | Cube Hex Mos. White Velvet

4. WATERPROOFING, SHOWER NICHE, BENCH AND DRAIN: Schluter Systems





FARMHOUSE FACELIFT

JENN & DARREN - SHOPPING GUIDE



1. PAINT: SICO - Trim & Ceiling: 6205-63
Monashee Mountains

2. MIRROR & LIGHT: Lowe's - Arline mirror |
Simone Pendant

3. WALLPAPER: Brewster Home Fashions -
Anemone Grey Floral

4. SINK AND FAUCET: House of Rohl -
Graceline widespread faucet





FARMHOUSE FACELIFT

JENN & DARREN - SHOPPING GUIDE



1.MIRROR: Lowe's - [Bevel oval mirror](#)

2.WALLPAPER: Brewster Home Fashions - [Bodri Light Blue Tulip Garden](#)

3. PLUMBING FIXTURES: House of Rohl - [Momenti single faucet](#) | [Kaldera tub](#) | [Momenti 3-Way System With Hand Shower Rail Shower Head And Spout](#) | [Momenti robe hook](#)

4.TILE: Ciot - [Skyline Brick Almond](#)

ADDITIONAL SUPPLIERS INCLUDE:

CUSTOM TOOLBELTS: [Akribis Leather](#)
TEMPORARY FLOOR PROTECTION: [Ramboard](#)
CONSTRUCTION FOOTWEAR: [Royer](#)