



# FARMHOUSE FACELIFT

ANNE & DAVID- SHOPPING GUIDE



1. SOFA & CHAIR: [LH Imports | Anderson Sofa in Woven Linen](#) | [Anderson Club Chair in Woven Linen](#)

2. RUG & THROW PILLOWS: [Jaipur Living Lark Area Rug](#) | [Burbank 22" Pillows in Colour 01](#)

3. THROW PILLOWS & DRAPERY FABRIC: [Tonic Living | Spar Stripe Pillow in Russet](#) | [Tuscany Linen in Sedona](#)

4 SHIPLAP & BEAM: [Millgrove Wood Products](#)





# FARMHOUSE FACELIFT

ANNE & DAVID- SHOPPING GUIDE



1. CHAIR: LH Imports | [Anderson Club Chair in Woven Linen](#)

2. RUGS & THROW BLANKET: Jaipur Living | [Lark Area Rug](#) | [Leila Runner](#) | [Nagaland Throw](#)

3. DRAPERY FABRIC: Tonic Living | [Tuscany Linen in Sedona](#)

4. MANTLE & BEAM: [Millgrove Wood Products](#)

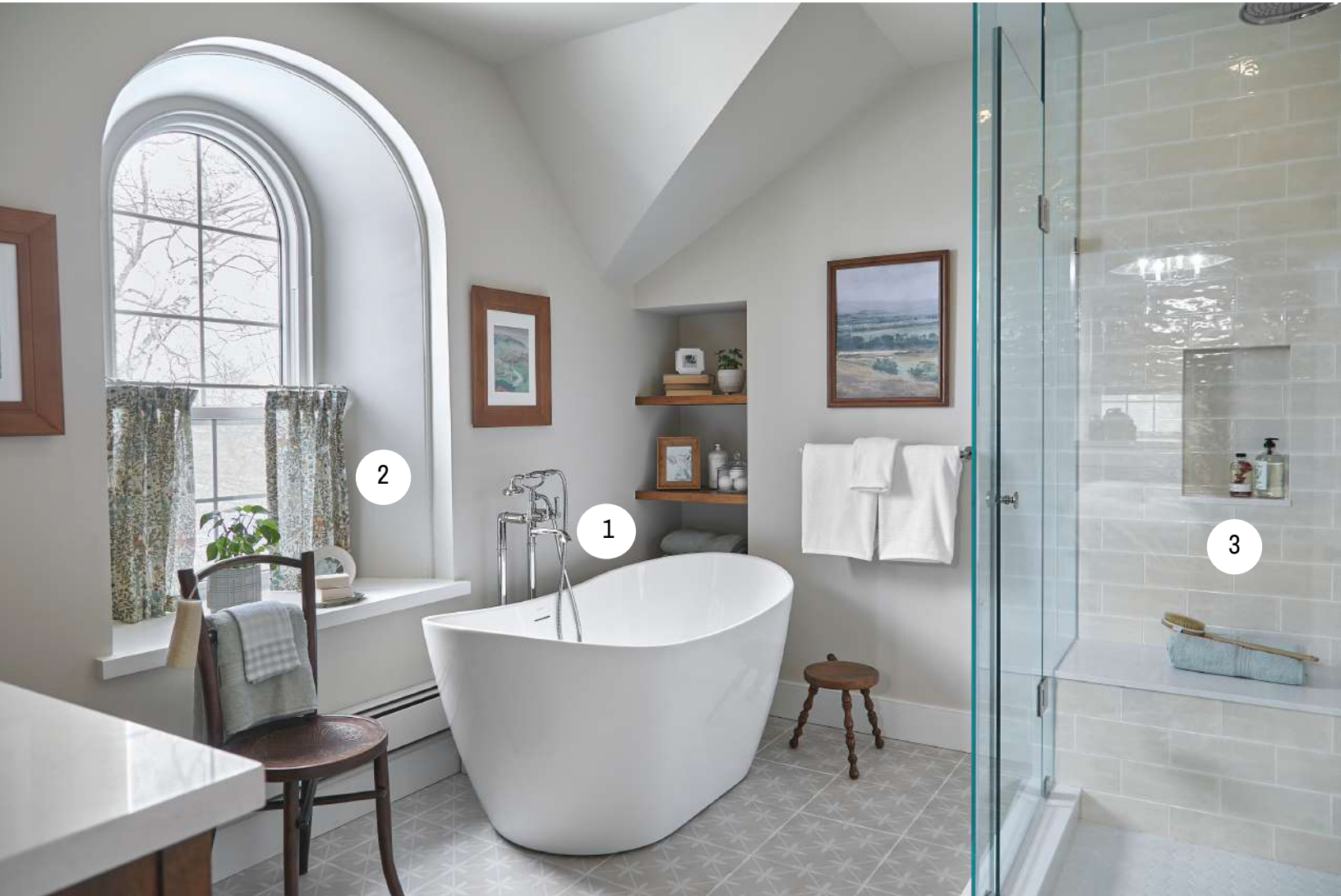
5. ARTWORK: [NorthPrints](#)





# FARMHOUSE FACELIFT

ANNE & DAVID- SHOPPING GUIDE



1. TUB FILLER & TOWEL BAR: Vogt Industries  
[Zehn Floor Mount Tub Filler in Polished Nickel](#) |  
[Zehn Double Towel Bar in Polished Nickel](#)

2. DRAPERY FABRIC: Lord Twig Wallpapers /  
C. F. A. Voysey | [The Shepherd Fabric in Parchment](#)

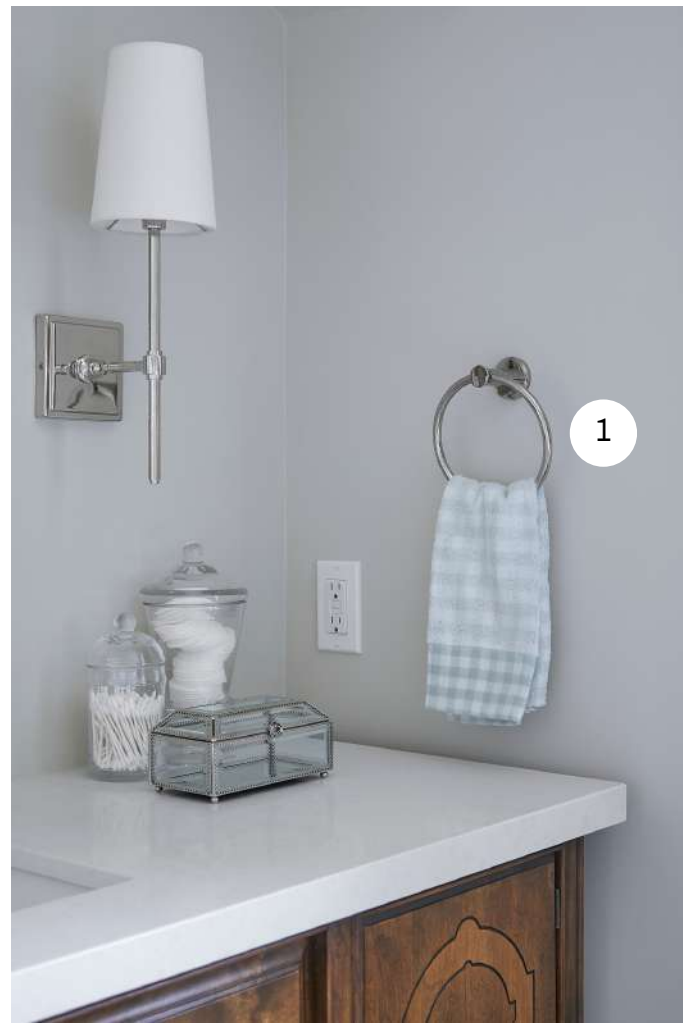
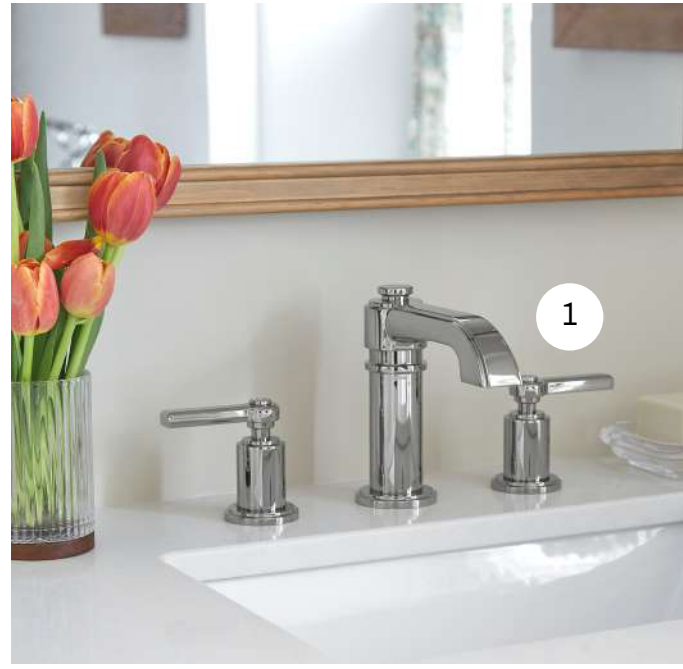
3. SHOWER NICHE & WATERPROOFING:  
[Schluter Systems](#)





# FARMHOUSE FACELIFT

ANNE & DAVID- SHOPPING GUIDE



1. SINK, FAUCET & TOWEL RING: [Vogt Industries | Bräu Vitreous China Undermount Sink](#) | [Zehn Lavatory Faucet in Polished Nickel](#) | [Zehn Towel Ring in Polished Nickel](#)



# FARMHOUSE FACELIFT

ANNE & DAVID - SHOPPING GUIDE



1. SHOWER FIXTURES: Vogt Industries | [Zehn 2-Way Thermostatic Set in Polished Nickel](#)

2. FLOOR DRAIN, WATERPROOFING & SHOWER NICHE: Schluter Systems | [Kerdi Drain in Floral Matte White](#) | [Niche & Waterproofing](#)



# FARMHOUSE FACELIFT

ANNE & DAVID - SHOPPING GUIDE



1. SHOWER FIXTURES & ROBE HOOK: [Vogt Industries | Wörgl 2-Way Pressure Balanced Set in Matte Black](#) | [Wörgl Robe Hook in Matte Black](#)

2. TILE: [Ciot | Vogue Materia trasparenze Mastice](#) | [Marvel Shine Calacatta Imperiale Mosaico Matt](#)

3. 2. FLOOR DRAIN, WATERPROOFING & SHOWER NICHE: [Schluter Systems | Kerdi Drain in Floral Matte Black](#) | [Niche & Waterproofing](#)



# FARMHOUSE FACELIFT

ANNE & DAVID- SHOPPING GUIDE



1. SHOWER FIXTURES & ROBE HOOK: Vogt Industries | [Wörgl 2-Way Pressure Balanced Set in Matte Black](#) | [Wörgl Robe Hook in Matte Black](#)

2. TILE: Ciot | [Vogue Materia trasparenze Mastice](#) | [Marvel Shine Calacatta Imperiale Mosaico Matt](#)

3. 2. FLOOR DRAIN, WATERPROOFING & SHOWER NICHE: Schluter Systems | [Kerdi Drain in Floral Matte Black](#) | [Niche & Waterproofing](#)



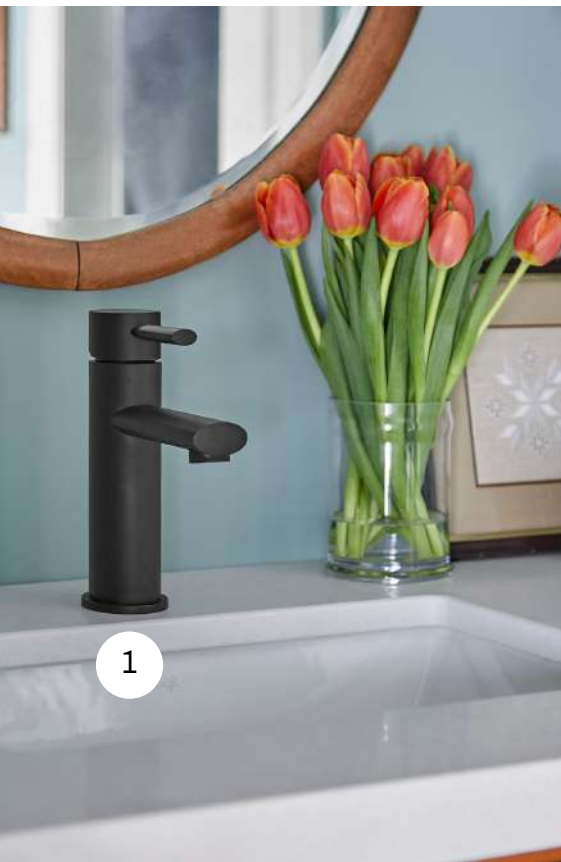


# FARMHOUSE FACELIFT

ANNE & DAVID- SHOPPING GUIDE



1. SINK & Faucet: Vogt Industries | [Bräu Vitreous China Undermount Sink](#) | [Wörgl Single Hole Lavatory Faucet](#)

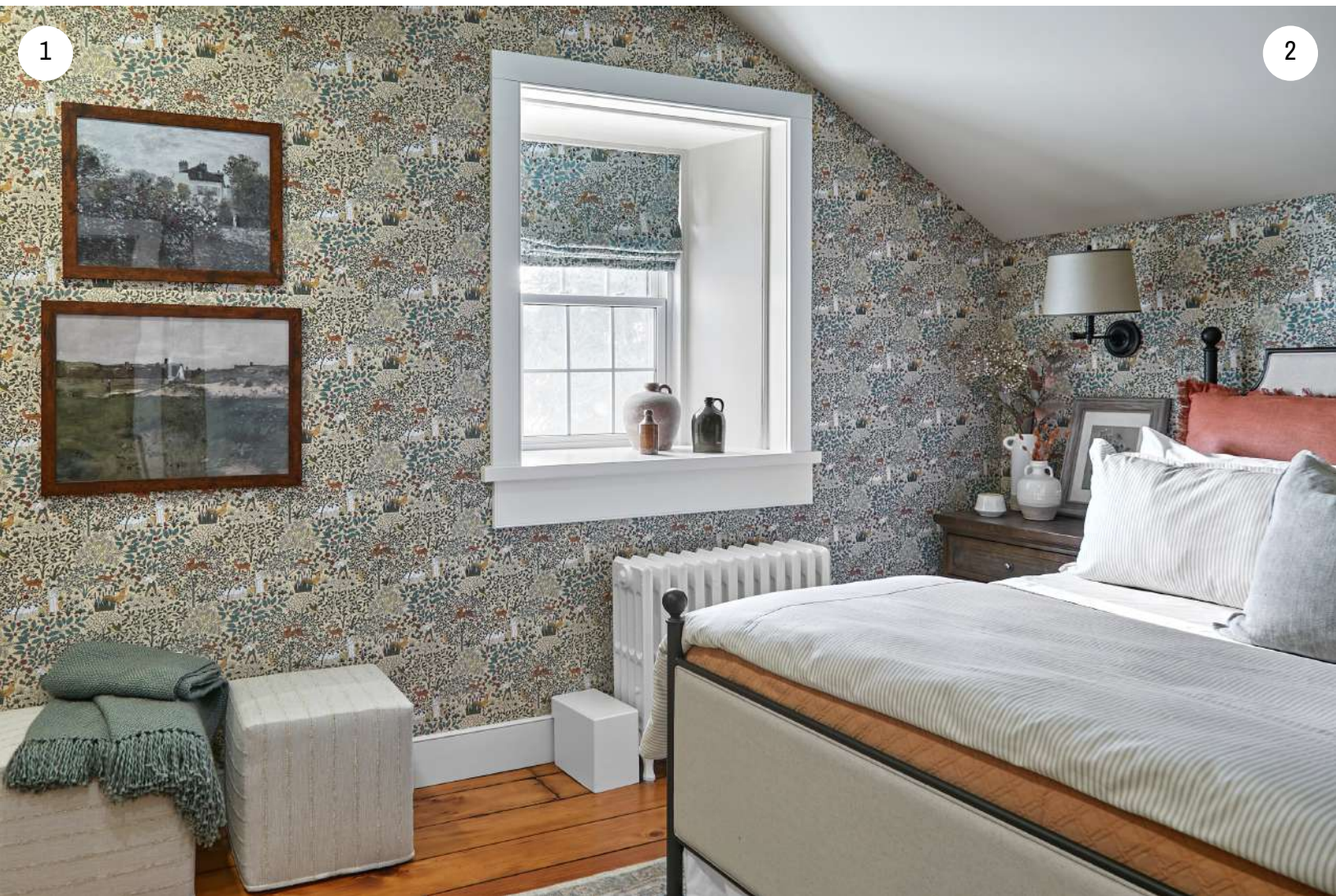






# FARMHOUSE FACELIFT

ANNE & DAVID- SHOPPING GUIDE



1. WALLPAPER & DRAPERY FABRIC: Lord Twig Wallpapers / C. F. A. Voysey | [The Shepherd Fabric in Parchment](#) | [The Shepherd Wallpaper in Parchment](#)

2. INSULATION: [Rockwool](#)

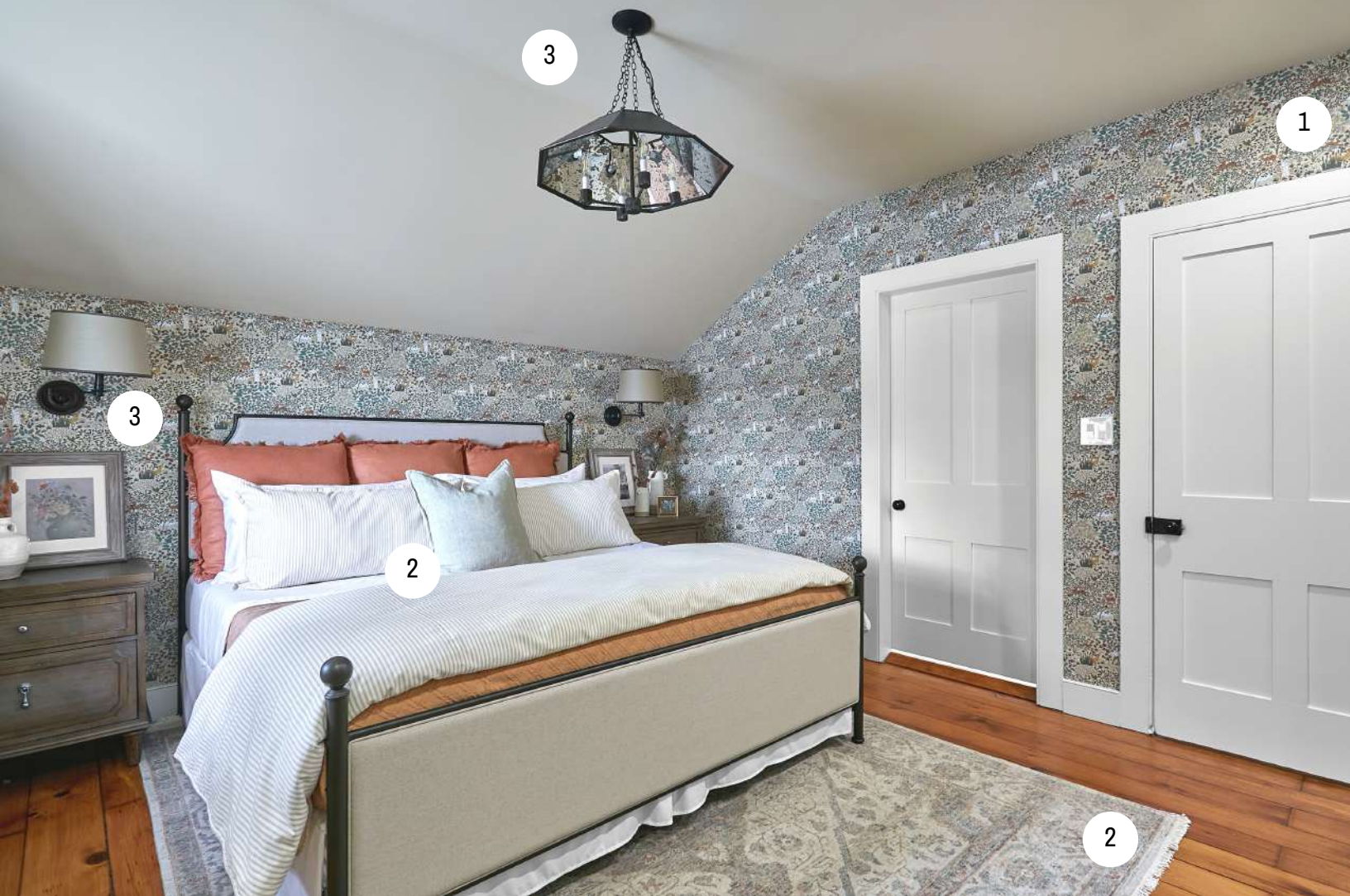
3. LIGHT FIXTURES: [Universal Lighting](#)





# FARMHOUSE FACELIFT

ANNE & DAVID- SHOPPING GUIDE



1. WALLPAPER: Lord Twig Wallpapers / C. F. A. Voysey | [The Shepherd Wallpaper in Parchment](#)

2. AREA RUGS & THROW PILLOWS: Jaipur Living | [Someplace In Time Rug](#) | [Burbank 20" Pillow in Colour 8](#)

3. LIGHT FIXTURES: [Universal Lighting](#)





# FARMHOUSE FACELIFT

ANNE & DAVID - SHOPPING GUIDE



1. CUSTOM WARDROBE: [Grimsbey Custom Cabinets](#)

2. WALLPAPER: Lord Twig Wallpapers / C. F. A. Voysey | [The Shepherd Wallpaper in Parchment](#)

**ADDITIONAL SUPPLIERS INCLUDE:**

TEMPORARY FLOOR PROTECTION: [Ramboard](#)

