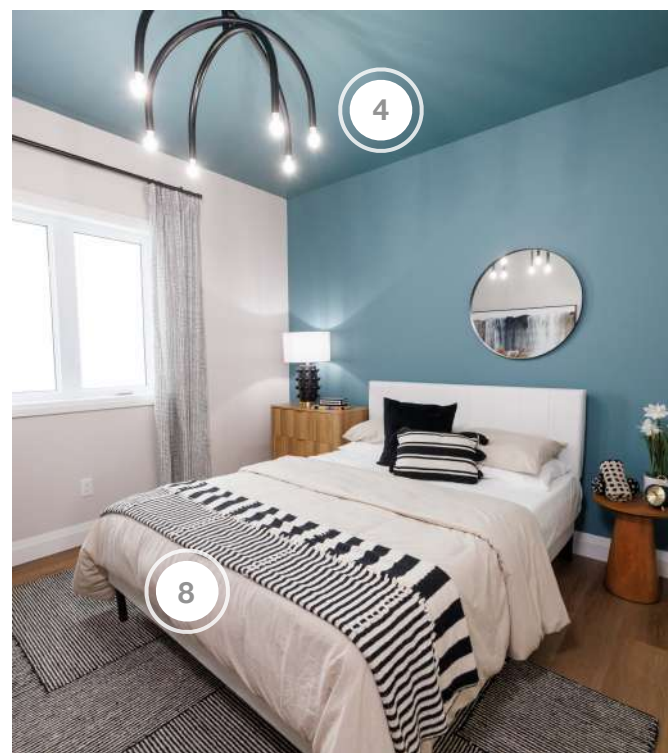
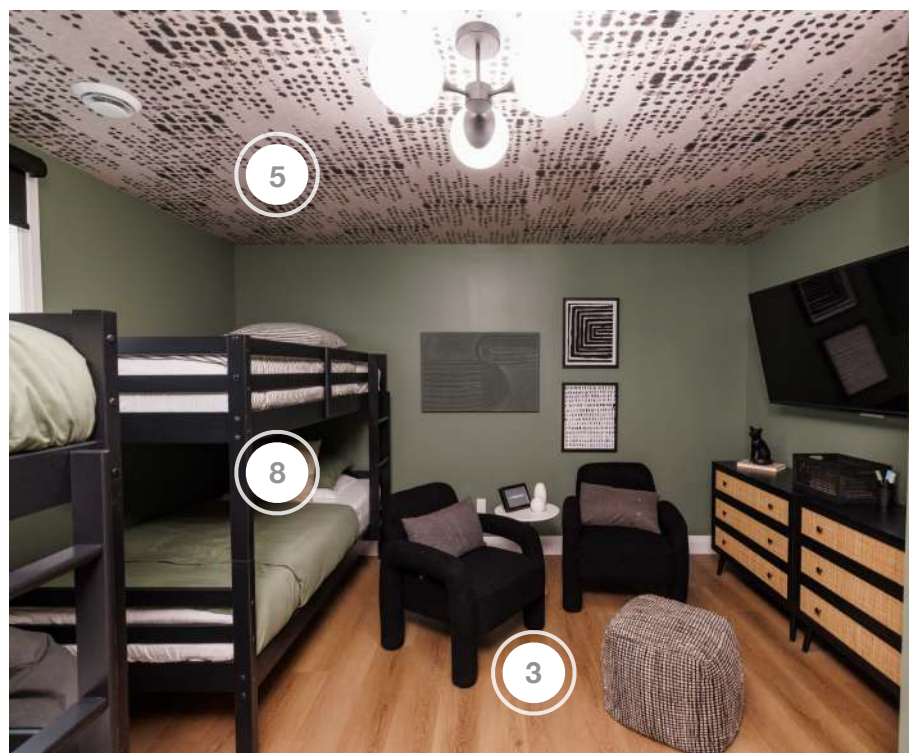


RENOVATION RESORT

SHOPPING GUIDE | SEASON 2 | EPISODE 5

CABIN 1 | RASHEEDA & JAKE



1. DOORS AND MORE - CUSTOM GLASS

2. EXPLORE HARDWARE - DOOR HARDWARE

3. FUZION - FLOORING

4. LIGHTHOUSE CO - LIGHTING

5. MILTON & KING - WALLPAPER

6. MOEN - PLUMBING FIXTURES & ACCESSORIES

7. SCHLUTER - COMPLETE WATERPROOFING SYSTEM

8. SILK & SNOW - MATTRESSES

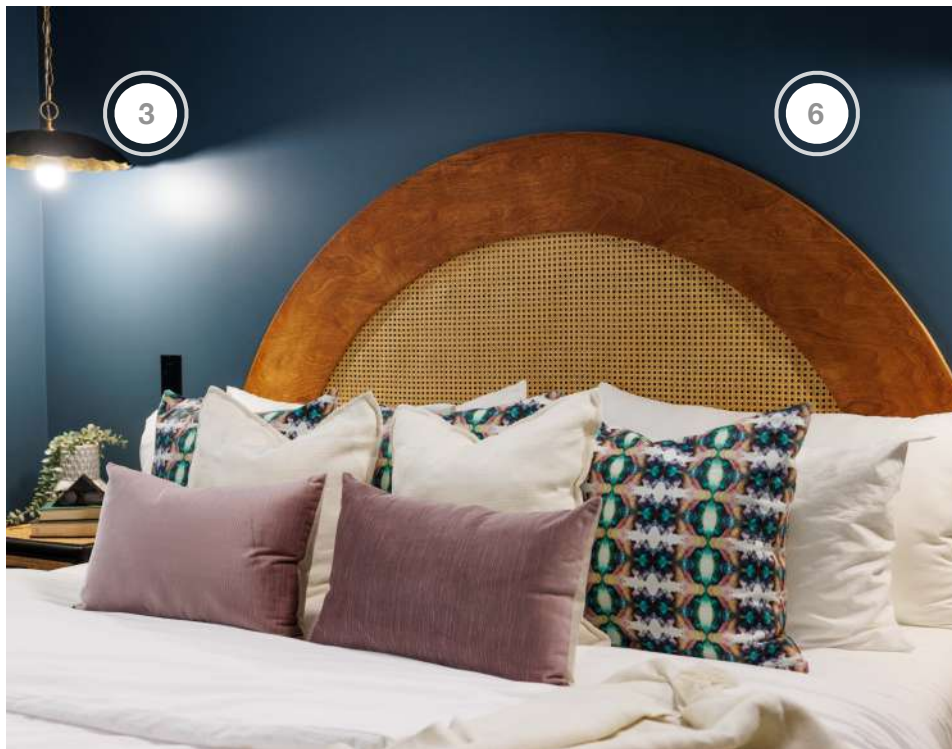
9. SS TILE AND STONE - TILE

10. TRIMLITE MANUFACTURING INC - INTERIOR DOORS

RENOVATION RESORT

SHOPPING GUIDE | SEASON 2 | EPISODE 5

CABIN 2 | MELISSA & SHANNON

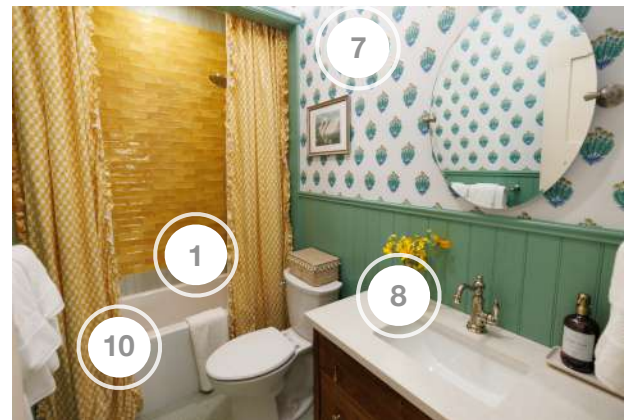
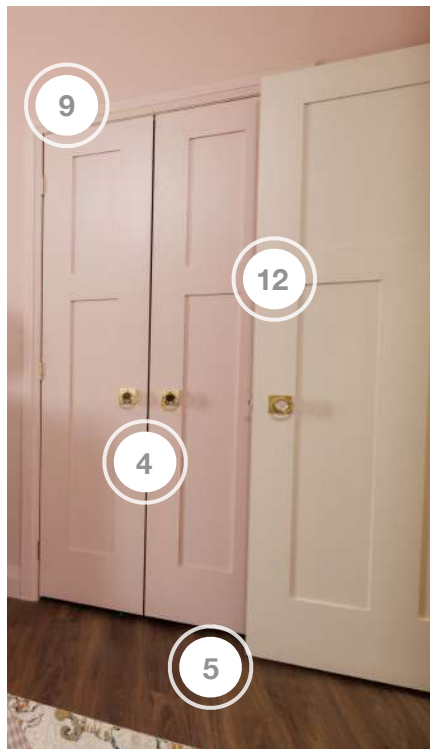
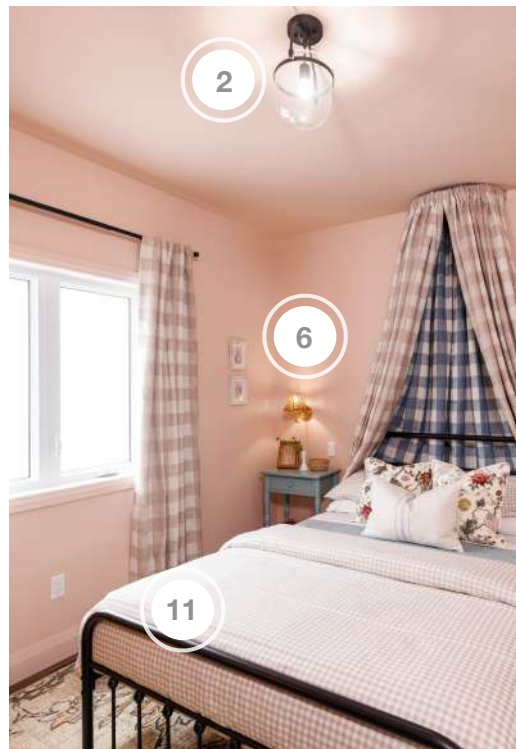
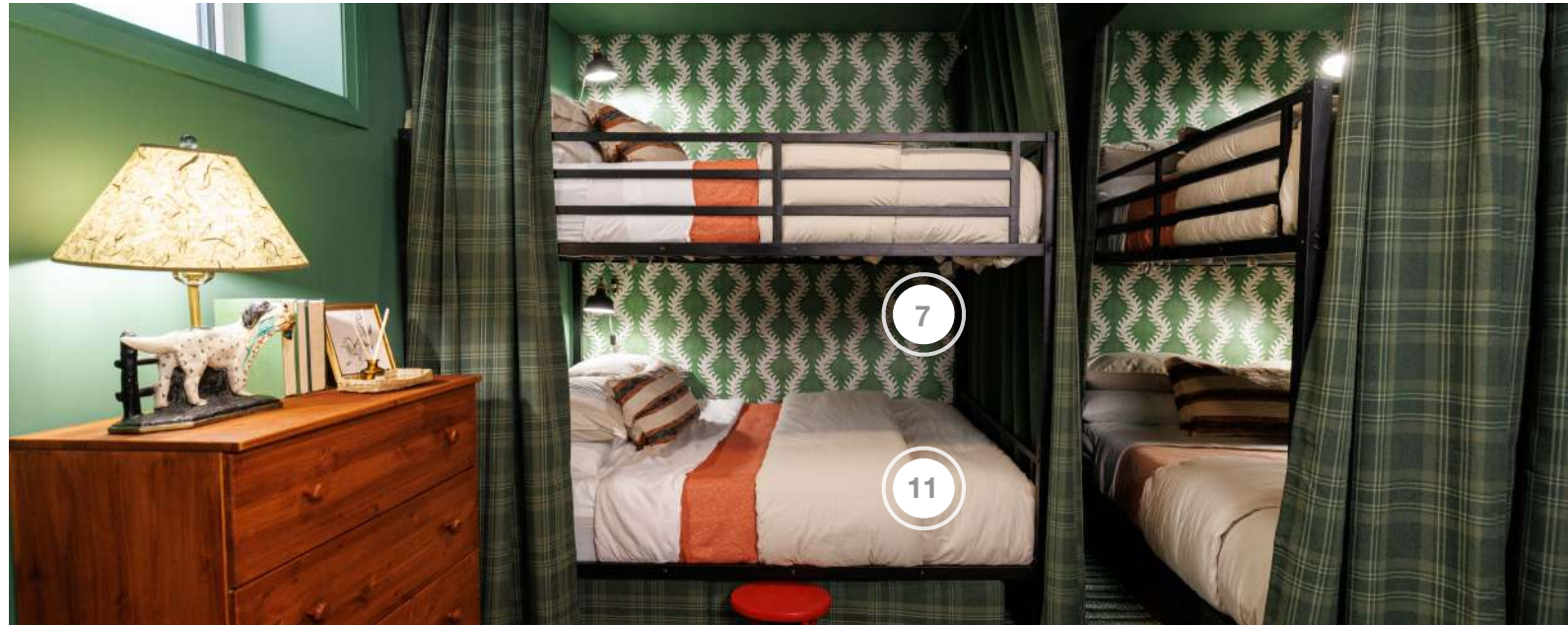


1. DOORS & MORE - CUSTOM GLASS
2. EXPLORE HARDWARE - DOOR HARDWARE
3. LIGHTHOUSE CO - LIGHTING
4. MOEN - PLUMBING ACCESSORIES
5. MURALS YOUR WAY - CUSTOM MURAL
6. RUST-OLEUM - COLOUR SPARK

7. SCHLUTER - COMPLETE WATERPROOFING SYSTEM
8. TILESINSPIRED - TILE
9. TRIMLITE MANUFACTURING INC - INTERIOR DOORS
10. VOGT INDUSTRIES - PLUMBING FIXTURES
11. WOODCA DESIGN - FLOORING

RENOVATION RESORT

SHOPPING GUIDE | SEASON 2 | EPISODE 5 CABIN 3 | CAMI & CHRIS



1. CERCAN TILE - TILE
2. DVI LIGHTING - LIGHTING
3. ELITE TRIMWORKS - VINYL PLANKS
4. EXPLORE HARDWARE - DOOR HARDWARE
5. FUZION - FLOORING
6. LIGHTHOUSE CO - LIGHTING

7. MILTON & KING - WALLPAPER
8. MOEN - PLUMBING FIXTURES & ACCESSORIES
9. RUST-OLEUM - COLOUR SPARK
10. SCHLUTER - COMPLETE WATERPROOFING SYSTEM
11. SILK & SNOW - MATTRESSES
12. TRIMLITE MANUFACTURING INC - INTERIOR DOORS

RENOVATION RESORT

SHOPPING GUIDE | SEASON 2 | EPISODE 5 CABIN 4 | HOLLIE & GRAHAM



1. DVI LIGHTING - LIGHTING
2. EXPLORE HARDWARE - DOOR HARDWARE
3. FUZION - FLOORING
4. MOEN - PLUMBING FIXTURES & ACCESSORIES
5. SCHLUTER - COMPLETE WATERPROOFING SYSTEM

6. SCOTT MCGILLIVRAY COLLECTION - LIGHTING
7. SILK & SNOW - MATTRESSES
8. SPOONFLOWER - WALLPAPER
9. TRIMLITE MANUFACTURING INC - INTERIOR DOORS



SHOPPING GUIDE | SEASON 2 | EPISODE 5

CABIN ONE

| COMPANY | PRODUCT DETAILS | LOCATION | WEBSITE |
|----------------------------|---|---------------------------|---|
| DOORS AND MORE | SINGLE PANEL TUB DOOR IN SATIN BRASS | MAIN BATH | https://www.doorsandmore.ca/ |
| EXPLORE HARDWARE | ATHENS IN BRASS | THROUGHOUT | https://explorehardware.com/ |
| FUZION FLOORING | #DY182AD01 ALMOND BUTTER FLOORING | THROUGHOUT | https://www.fuzionflooring.com/ |
| LIGHT HOUSE CO | BOLHA PENDANT SMALL IN AGED GOLD BRASS, NEUVEAU 3 LIGHT SEMI FLUSH IN MATTE BLACK AND OPAL GLASS AND CHRISTIAN CHANDELIER IN MATTE BLACK | MAIN BATH & GUEST BEDROOM | https://www.lighthouseco.ca/ |
| MILTON & KING | LOVE NOTE WALLPAPER | GUEST BEDROOM | https://www.miltonandking.com/ |
| MOEN | #3887EPBG MOEN BRUSHED GOLD ECO-PERFORMANCE HANDHELD SHOWER, #6190BG ALIGN BRUSHED GOLD ONE-HANDLE HIGH ARC BATHROOM FAUCET, #YB0408BG ALIGN BRUSHED GOLD PIVOTING TOILET PAPER HOLDER, #YB0424BG ALIGN BRUSHED GOLD 24" TOWEL BAR, #YB0403BG ALIGN BRUSHED GOLD SINGLE ROBE HOOK, #220R7BG VERSO 7" RAINSHOWER WITH INFINITI DIAL IN BRUSHED GOLD, #TF195827BG ALIGN BRUSHED GOLD TUB FILLER, #YB1701BG GREENFIELD BRUSHED GOLD TANK LEVER, #900-006-04 FLO SMART WATER MONITOR & SHUT OFF AND #YB1794BG GREENFIELD BRUSHED GOLD TOWEL SHELF | MAIN BATH | https://www.moen.ca/ |
| SCHLUTER | COMPLETE WATERPROOFING SYSTEM | MAIN BATH | https://www.schluter.ca/schluter-ca/en_CA |
| SILK & SNOW | QUEEN & TWIN MATTRESSES | GUEST BEDROOM | https://www.silkandsnow.com/en-ca/ |
| SS TILE & STONE | 2X10 PIASTRELLA MIX BY NATUCER, 6X6 RETROMIX BY VITRA, TRIANGLE BWL AND 6X6 RETROMIX BY VITRA IN WHITE | MAIN BATH | https://sstileandstone.ca/ |
| TRIMLITE MANUFACTURING INC | INTERIOR DOORS | THROUGHOUT | https://www.trimlite.com/ |

CABIN TWO

| COMPANY | PRODUCT DETAILS | LOCATION | WEBSITE |
|------------------|---|---------------------------|---|
| DOORS AND MORE | SINGLE PANEL TUB DOOR IN SATIN BRASS | MAIN BATH | https://www.doorsandmore.ca/ |
| EXPLORE HARDWARE | LONDON IN BLACK | THROUGHOUT | https://explorehardware.com/ |
| LIGHT HOUSE CO | STEVESTON LED VANITY LIGHT IN AGED GOLD BRASS AND PRIMROSE PENDANT IN BLACK AND GOLD LEAF | MAIN BATH & GUEST BEDROOM | https://www.lighthouseco.ca/ |
| MOEN | #YB1788BG GREENFIELD BRUSHED GOLD DOUBLE PAPER HOLDER, #YB1718BG GREENFIELD BRUSHED GOLD TOWEL BAR, #YB0501BG COLINET BRUSHED GOLD TANK LEVER, #YB0301BG FLARA BRUSHED GOLD TANK LEVER, #YB1703BG GREENFIELD BRUSHED GOLD DOUBLE ROBE HOOK AND #900-006-02 FLO SMART WATER MONITOR SHUT OFF | MAIN BATH | https://www.moen.ca/ |



SHOPPING GUIDE | SEASON 2 | EPISODE 5

| COMPANY | PRODUCT DETAILS | LOCATION | WEBSITE |
|----------------------------|--|---------------|---|
| MURALS YOUR WAY | SMARTSTICK MURAL | GUEST BEDROOM | https://www.muralsyourway.com/ |
| SCHLUTER | COMPLETE WATERPROOFING SYSTEM | MAIN BATH | https://www.schluter.ca/schluter-ca/en_CA |
| SILK & SNOW | TWIN MATTRESSES | GUEST BEDROOM | https://www.silkandsnow.com/en-ca/ |
| TILESINSPIRED | WHITE KEYS 5 X 10 | MAIN BATH | https://tilesinspired.com/ |
| TRIMLITE MANUFACTURING INC | INTERIOR DOORS | THROUGHOUT | https://www.trimlite.com/ |
| VOGT INDUSTRIES | #TM.Z1.320.310.BG ZEHN TRIM FOR 3-WAY TH SHOWER KIT [VE.320] VALVE - VE.320 3-WAY TH VALVE IN BRUSHED GOLD | MAIN BATH | https://www.vogtindustries.com/ |
| WOODCA DESIGN | MALLUMO FLOORING | THROUGHOUT | https://www.woodcadesign.com/ |

CABIN THREE

| COMPANY | PRODUCT DETAILS | LOCATION | WEBSITE |
|----------------------------|--|---------------------------|---|
| CERCAN TILE | MW TINY SAGE & OCHER | MAIN BATH | https://www.cercantile.com/ |
| DVI LIGHTING | #DVP37222EB-RIO DORSET 2 LIGHT VANITY IN EBONY AND #DVP39528EB+PSB-CCT ALCENON 13.5" FLUSH MOUNT IN EBONY AND BRASS | MAIN BATH & GUEST BEDROOM | https://www.dvcanada.com/ |
| ELITE TRIMWORKS | BEADED VINYL PLANK | MAIN BATH | https://www.elitetrimworks.com/cd/ |
| EXPLORE HARDWARE | SEYCHELLES IN BRASS | THROUGHOUT | https://explorehardware.com/ |
| FUZION FLOORING | AMISTAD DY180AM02 FLOORING | THROUGHOUT | https://www.fuzionflooring.com/ |
| LIGHT HOUSE CO | ISSA WALL SCONCE AND CERAMICHE SEMI FLUSH MOUNT | GUEST BEDROOM | https://www.lighthouseco.ca/ |
| MILTON & KING | BUTI WALLPAPER IN GREEN IVORY AND FERN WALLPAPER IN FERN GREEN | MAIN BATH & GUEST BEDROOM | https://www.miltonandking.com/ |
| MOEN | #TS32104NL WEYMOUTH POLISHED NICKEL POSI-TEMP® TUB/SHOWER, #S42107NL WEYMOUTH ONE-HANDLE HIGH ARC BATHROOM FAUCET, #YB8486NL WEYMOUTH POLISHED NICKEL TOWEL BAR, #YB8408NL WEYMOUTH POLISHED NICKEL PIVOTING TOILET PAPER #YB8401NL WEYMOUTH POLISHED NICKEL TANK LEVER, #DN6892BN SAGE BRUSHED NICKEL MIRROR AND #TR1000BN BRUSHED NICKEL TENSION ROD | MAIN BATH | https://www.moen.ca/ |
| SCHLUTER | COMPLETE WATERPROOFING SYSTEM | MAIN BATH | https://www.schluter.ca/schluter-ca/en_CA |
| SILK & SNOW | QUEEN & TWIN MATTRESSES | GUEST BEDROOM | https://www.silkandsnow.com/en-ca/ |
| TRIMLITE MANUFACTURING INC | INTERIOR DOORS | THROUGHOUT | https://www.trimlite.com/ |



SHOPPING GUIDE | SEASON 2 | EPISODE 5

CABIN FOUR

| COMPANY | PRODUCT DETAILS | LOCATION | WEBSITE |
|------------------------------|---|---------------------------|---|
| DVI LIGHTING | #DVP48001CH-OP KANATA 1 LIGHT SCONCE IN CHROME AND #DVP5348EB-SW MILAN 3 LIGHT FLUSH MOUNT IN EBONY AND WHITE SHADE | MAIN BATH & GUEST BEDROOM | https://www.dvcanada.com/ |
| EXPLORE HARDWARE | BALI IN BLACK | THROUGHOUT | https://explorehardware.com/ |
| FUZION FLOORING | COCOON DY180CC11-5GI FLOORING | THROUGHOUT | https://www.fuzionflooring.com/ |
| MOEN | #2590-01 BELFIELD ONE-HANDLE CHROME FAUCET 6402 M-PACT POSI-TEMP® 1/2" IPS CONNECTION, #T2253EP BRANTFORD CHROME POSI-TEMP TUB/ SHOWER, #YB6401CH BELFIELD TANK LEVER, #YB8403CH WEYMOUTH ROBE HOOK, #YB8408CH WEYMOUTH PAPER HOLDER, #YB8424CH WEYMOUTH 24" TOWEL BAR AND #900-006-02 FLO SMART WATER MONITOR & SHUT OFF | MAIN BATH | https://www.moen.ca/ |
| SCHLUTER | COMPLETE WATERPROOFING SYSTEM | MAIN BATH | https://www.schluter.ca/schluter-ca/en_CA |
| SCOTT MCGILLIVRAY COLLECTION | RYLAN SCONCE | GUEST BEDROOM | https://www.homehardware.ca/en/brands/scott-mcgillivray |
| SILK & SNOW | FULL AND TWIN MATTRESSES | GUEST BEDROOM | https://www.silkandsnow.com/en-ca/ |
| SPOONFLOWER | 8 X 2' X 3' FRENCH COUNTRY FLORALS AND LEAVES IN GREIGE GREEN & OFF WHITE PEEL AND STICK | MAIN BATH | https://www.spoonflower.com/ |
| TRIMLITE MANUFACTURING INC | INTERIOR DOORS | THROUGHOUT | https://www.trimlite.com/ |

| COMPANY | PRODUCT DETAILS | LOCATION | WEBSITE |
|-------------------------|---|------------|---|
| BFF PRINT SHOP | ARTWORK | THROUGHOUT | https://bffprintshop.com/ |
| CAMPBELL MONUMENT | "RENO RESORT" STONE ETCHING | EXTERIOR | https://www.campbellmonument.com/ |
| CANADIAN CUSTOM APPAREL | CUSTOM RENOVATION RESORT SWEATERS | THROUGHOUT | https://canadiancustomapparel.com/ |
| CANVAS & DECOR | PHOTO PRINTS | THROUGHOUT | https://www.canvasndecor.ca/ |
| CARHARTT | 6" STEEL TOE WEDGE BOOT IN SOFT TAN FULL GRAIN LEATHER, WOMEN'S WATERPROOF 6" MOC STEEL TOE WEDGE WORK BOOT IN CARHARTT BROWN, FIRM DUCK WAIST APRON AND MISC APPAREL | THROUGHOUT | https://www.carhartt.com/ |
| DANBY | DANBY 14,000 BTU (10,000 SACC) PORTABLE AC | THROUGHOUT | https://www.danby.com/ |
| DVI LIGHTING | #DVP46841BN AC LED 48" LINEAR IN BUFFED NICKEL AND #DVP39158MW RECTANGULAR 48" FLUSH MOUNT IN MATTE WHITE | GARAGES | https://www.dvcanada.com/ |



SHOPPING GUIDE | SEASON 2 | EPISODE 5

| COMPANY | PRODUCT DETAILS | LOCATION | WEBSITE |
|------------------------|---|------------|---|
| FAUXLIAGE | ARTIFICIAL PLANTS | THROUGHOUT | https://fauxliage.ca/ |
| GARAGA | STANDARD+ SHAKER-FLAT XS STYLE" GARAGE DOORS WITH AUTOMATIC OPENERS FOR THE 4 COMPETITOR CABINS INCLUDING DELIVERY & INSTALLATION | GARAGES | https://www.garaga.com/ca |
| GLADIATOR GARAGE WORKS | #GANF03WFMTS FLEX CABINET, #GANA24HWMX WOOD TOP, #GAWB06HWEG WORKBENCH - 6', #GAWP082PBY 8' GEARWALL® PANELS (2-PACK) // 16' WIDE SETUP, #GAWT086PBY GEARWALL® PANEL TRIM AND #GAWA24SKRH ACCESSORIES DELUXE STARTER PACK | GARAGES | https://www.gladiatorgarageworks.whirlpool.ca/en_ca.html |
| GREENWORKS | GREENWORKS 80V 21" SELF-PROPELLED LAWN MOWER WITH 1 EXTRA BLADE, 2.0 AH + 4.0 AH BATTERY AND CHARGER INCLUDED AND MISC TOOLS | THROUGHOUT | https://greenworkstools.ca/ |
| JUNIPER PRINT SHOP | ARTWORK | THROUGHOUT | https://juniperprintshop.com/ |
| KUMA OUTDOOR | SWITCHBACK CHAIR HEATED IN RED AND BLACK | EXTERIOR | https://www.kumaoutdoorgear.com/ |
| NYDOCK | 16' X 24' PT DECKED FLOATING DOCK C/W 4 18" DIA PONTOONS, 8' X 16' PT DECKED FLOATING DOCK C/W 2 18" DIA PONTOONS AND 6' X 12' PT DECKED RAMP C/W 1 18" RAMP PONTOON | EXTERIOR | https://nydock.com/ |
| ON THE WAY CAFE | 6 WATER COOLERS, BOTTLES OF WATER, 1 C600 OR C300 COFFEE BREWER, CASES OF COFFEE (DARK, MEDIUM, LIGHT, DECAF) WITH MILK FROTH, HOT CHOCOLATE, SUGAR, STIR STICKS, CUPS, MILKETTES AND CREAMERS | THROUGHOUT | https://www.onthewaycafe.ca/ |
| PERGOLUX | PERGOLUX PERGOLA S2 | EXTERIOR | https://pergoluxshop.com/ |
| RAM BOARD | FLOOR PROTECTION | THROUGHOUT | https://www.ramboard.com/ |
| ROCKWOOL | SAFE'N'SOUND 3" 16" AND COMFORTBATT R22 16" | THROUGHOUT | https://www.rockwool.com/north-america/ |
| ROVE BOARD CO. | RED CANOE & SAFETY KIT | EXTERIOR | https://www.roveboards.com/ |
| RUST-OLEUM | PAINT & PRIMER | THROUGHOUT | https://www.rustoleum.com/ |
| RYOBI | TOOLS | THROUGHOUT | https://ryobitools.ca/ |
| THE FLAG STORE | 27" X 54" CUSTOM RENOVATION RESORT FLAG WITH 18' POLE AND ROCK & DOCK BASE | EXTERIOR | https://www.theflagstore.ca/ |
| THE JACKPOT | PLASTIC UNITS AND WASH STATIONS | EXTERIOR | https://thejackpot.ca/ |
| TOJA | #HMTE2939MBX MODERN MUSKOKA EXTENDED DINING TABLE KIT, MODERN MUSKOKA EXTENDED DINING TABLE KIT, #G05BE1817MB1-R MODERN MUSKOKA BENCH KIT, #G031014MB1 SOLO PERGOLA POST BASE AND WALL MOUNT BRACKET FOR 6X6 WOOD POSTS, #G031090MB1 T BRACKET FOR 6X6 WOOD POSTS, #G031020MB1 DUO L BRACKET FOR 6X6 WOOD POSTS AND #G032082MB1 GENERIC HANGER BRACKET FOR 6X6 WOOD POSTS | EXTERIOR | https://tojagrid.ca/ |